



Notice is given of an Assets and Services Committee Meeting to be held on:

Date: Thursday, 28 February 2019

Time: Following Finance

**Location: Council Chambers
Fairlie**

AGENDA

Assets and Services Committee Meeting

28 February 2019

**Suzette van Aswegen
Chief Executive Officer**

Assets and Services Committee Membership:

Stuart Barwood (Chair)

Russell Armstrong

Chris Clarke

Paul Hannagan

James Leslie

Anne Munro

Mayor Graham Smith

The purpose of local government:

(1) The purpose of local government is—

- (a) to enable democratic local decision-making and action by, and on behalf of, communities; and
- (b) to meet the current and future needs of communities for good-quality local infrastructure, local public services, and performance of regulatory functions in a way that is most cost-effective for households and businesses.

(2) In this Act, good-quality, in relation to local infrastructure, local public services, and performance of regulatory functions, means infrastructure, services, and performance that are—

- (a) efficient; and
- (b) effective; and
- (c) appropriate to present and anticipated future circumstances.

(Local Government Act 2002)

Order Of Business

1	Opening	5
2	Apologies	5
3	Declarations Of Interest.....	5
4	Visitors.....	5
5	Reports	6
5.1	Minutes of Assets and Services Committee Meeting - 20 November 2018	6
5.2	Asset Managers Monthly Report	12
5.3	Community Facilities Report	23

- 1 OPENING**
- 2 APOLOGIES**
- 3 DECLARATIONS OF INTEREST**
- 4 VISITORS**

5 REPORTS

5.1 MINUTES OF ASSETS AND SERVICES COMMITTEE MEETING - 20 NOVEMBER 2018

File Reference: PAD

Author: Charlotte Borrell, Committee Administrator

Authoriser: Toni Morrison, Group Manager Projects and Administration

Attachments: 1. Minutes of Assets and Services Committee Meeting - 20 November 2018

RECOMMENDATION

1. That the Minutes of the Assets and Services Committee Meeting held on Tuesday 20 November 2018 be received and adopted a true and accurate record of the meeting.



MINUTES

Assets and Services Committee Meeting

20 November 2018

**MINUTES OF MACKENZIE DISTRICT COUNCIL
ASSETS AND SERVICES COMMITTEE MEETING
HELD AT THE COUNCIL CHAMBERS, FAIRLIE
ON TUESDAY, 20 NOVEMBER 2018 AT 11.00am FOLLOWING THE FINANCE COMMITTEE MEETING**

PRESENT: Cr Stuart Barwood (Chairperson), Cr Russell Armstrong, Cr Anne Munro, Cr Chris Clarke, Cr Paul Hannagan, Cr James Leslie, Mayor Graham Smith

IN ATTENDANCE: Suzette van Aswegen (Chief Executive), Bernie Haar (Group Manager Assets), Scott McKenzie (Roding Manager), Geoff Horler (Utilities Manager), Angie Taylor (Solid Waste Manager), Arlene Goss (Committee Administrator)

1 OPENING

The chairman opened the meeting.

2 APOLOGIES

There were no apologies.

3 DECLARATIONS OF INTEREST

There were no declarations of interest.

4 VISITORS

There were no visitors.

5 REPORTS

5.1 MINUTES OF ASSETS AND SERVICES COMMITTEE MEETING - 28 AUGUST 2018

Discussion of the minutes included the following matters:

- The purchase of land in Twizel for the new wastewater facility was still being held up by the vendor's lawyer in Auckland. Mr Haar would continue to work on this.
- Cr Hannagan asked for information on work planned on the water supply in Twizel and Geoff Horler updated him. He also asked about a problem at a sewerage pump station. This was a battery failure and there was no route for Council to recover costs on this repair.
- The Mayor asked about the Tekapo Saleyards water leaks. Mr Horler said he got a second opinion and there were two substantial leaks coming from natural sources.
- Cr Barwood asked for an update on speed restrictions on the main highway through Tekapo. Roding manager Scott McKenzie updated him. The Mayor said NZTA put out a schedule when they approved the work and were way behind schedule. Cr Hannagan suggested putting up a temporary speed sign in the meantime. The Mayor asked Mr McKenzie to follow up with NZTA on their work schedule.
- Cr Hannagan asked when road markings would be done in Twizel. Mr McKenzie said the road markers were currently in the district and working from east to west.

COMMITTEE RESOLUTION ASC/2018/74

Moved: Cr Graham Smith

Seconded: Cr Anne Munro

1. That the Minutes of the Assets and Services Committee Meeting held on Tuesday 28 August 2018 be received and adopted a true and accurate record of the meeting.

CARRIED

5.2 ASSET MANAGERS REPORT

The purpose of this report was to update the Assets and Services Committee on various projects and also the normal operation of the department for the past month.

Geoff Horler said tendering was underway for the new water supply at the Pukaki Airport and he would like to get this underway in the new year.

Councillors asked for updates on various projects including the bus park at Tekapo. Cr Munro asked about the issue of heavier trucks wanting to use local roads. Scott McKenzie said currently this was controlled by the bridge engineer who knows the structures in the district. If Council opened up the whole district to 50max there was a chance the quality of the roading network would drop. Council does issue permits for overweight vehicles for 12 month periods. He would like to stick with the status quo.

North Street pedestrian bridge in Fairlie needs repair. The engineer was drawing up a design to replace this bridge and will do a costing. The timeline would depend on the availability of hardwood beams. This bridge is closed in the meantime. Mr McKenzie was asked to put something into the Fairlie Accessible on this project.

Angie Taylor said the new litter bins were due to arrive by the end of the month. The free green waste day was very busy and there was a lot of good feedback from the community.

Noted that FENZ was now monitoring fire risk property vegetation and Council would no longer be sending out letters to property owners asking them to mow their properties.

Cr Armstrong said the Whitestone yard in Twizel needed to be tidied up, outside the fence. Staff were asked to contact them regarding this.

5.3 FAIRLIE WATER SUPPLY TREATMENT UPGRADE

The Fairlie Water Supply has an upgrade to its treatment planned for this financial year. This report provided information on the steps taken since 2012 to identify the most appropriate treatment option to meet the New Zealand Drinking Water Standards (DWSNZ 2005, revised 2008) (DWS) for this supply.

This report was taken as read and councillors asked questions of Mr Horler and Mr Haar.

A new water safety plan has been designed around moving to the new intake. Mr Horler said Council may be able to get a variation on its current consent rather than a new consent. Discussion was held on why the location of the new intake was chosen. This included the water not being as

muddy when it rained. The next stage would be to introduce storage so they could shut the valves and use stored water during heavy rain.

The chairman wanted to add “subject to an agreement signed with Mr Waters” first before going to the market. There was a need to secure the site before committing to the new supply. A new resolution was drafted and added to meet this concern. The committee administrator was asked to insert the new recommendation at number 2 below.

COMMITTEE RESOLUTION ASC/2018/75

Moved: Cr Anne Munro

Seconded: Cr Russell Armstrong

1. That the report be received.

CARRIED

COMMITTEE RESOLUTION ASC/2018/76

Moved: Cr Chris Clarke

Seconded: Cr Paul Hannagan

2. That this be subject to certainty around future ownership and access and that Council move to secure the site for the future water supply of Fairlie.

CARRIED

COMMITTEE RESOLUTION ASC/2018/77

Moved: Cr Chris Clarke

Seconded: Cr Russell Armstrong

3. That the new water source on the Waters property be developed as the new supply for Fairlie with improved treatment to comply with the Drinking Water Standards.
4. That quotes for the “Design and Build” for the treatment options be obtained from the suppliers who specialise in this line of work.

CARRIED

6.1 PUBLIC EXCLUDED MINUTES**COMMITTEE RESOLUTION ASC/2018/78**

Moved: Cr Anne Munro

Seconded: Cr Paul Hannagan

That the Minutes of the Public Excluded Assets and Services Committee Meeting held on Tuesday 28 August 2018 be received and adopted as a true and accurate record of the meeting.

CARRIED

The committee noted that Murray Petrie from Opus was retiring. He had provided good, sound advice to Council on many issues in the past. They agreed to send him a letter of thanks, drafted by Mr Haar and signed by the Mayor.

The Meeting closed at 12.14pm.

The minutes of this meeting were confirmed at the Assets and Services Committee Meeting held on 15 January 2019.

.....

CHAIRPERSON

5.2 ASSET MANAGERS MONTHLY REPORT

File Reference: WAS 1/1
Author: Bernie Haar, Group Manager Assets
Authoriser: Bernie Haar, Group Manager Assets
Attachments: Nil

STAFF RECOMMENDATIONS

1. That the report be received.
2. That the information be noted.

BACKGROUND

This report is to update the Assets and Services Committee on the progress on various projects and also the normal operation of the department for the past month.

UTILITIES**Twizel Water**

The pipe work alteration at the intake will take place as soon as the contract get some fittings that they are waiting on. These have to be made so we are at the mercy of the manufacture. There was one day where the communication equipment failed and the bore pumps did not start for approximately 12 hours. An investigation was undertaken as to the cause of the fault and processes have been changed to prevent it happening again. With the river now in a low flow state, level 1 restrictions have been imposed with a maximum of four hours irrigation and a request to conserve water.

Twizel Waste Water Disposal Upgrade

The waste water ponds upgrade with the mille screen, flow monitoring and the disposal fields now completed. At long last Council now owns the land around the ponds.

The only work required to complete the project is to fence the perimeter of Council's site with a stock fence so that the area can be grazed to keep tidy. Also we need to construct a new access to the site as the current access is over the adjacent land that we do not have an easement over.

Work will start shortly on rehabilitating the old disposal trench that has been unused for more than twelve months.



Mille Screen at Twizel Waste Water Treatment Plant.

Fairlie water supply

Level 1 restrictions has been imposed on Fairlie with no watering of lawns and conserve water. With the level of the river continuing to drop it is looking like level 2 will be impose soon. Note this is a requirement of our resource consent to take water.

Drinking-water Standards for New Zealand 2005 (Revised 2018)

The Ministry of Health has released an updated drinking-water standard, DWSNZ 2005 (Revised 2018) which will come into effect on 1 March this year.

Having reviewed the revised standard there are no impacts for Mackenzie District as all of the sampling we undertake complies with the new requirements.

Fairlie and Tekapo Waste Water Ponds

About a month ago a child found their way into another Council Waste Water Ponds and unfortunately the child drowned. This is going to shine the spot light on all other councils around the security of oxidation ponds. This was an unfortunate event however Work Place Safety have made it their affair even through the Police are investigating and it was not an employee involved.

All Councils sites are fenced but only Twizel and Burkes Pass have high fencing. We are reviewing the security of the access to Fairlie and Tekapo to ensure there are no gaps in the security fence to allow easy access.

Budget Breakdown**Water:**

Operation and Maintenance expenditure as at the end of December 2018.

Electricity cost \$43,429 is under budget by \$36,569.

Contractors \$183,948 is over budget by \$36,569. This due to looking for leaks in Fairlie and Tekapo and then repairing them, particularly around the ponding water at the Saleyards in Tekapo.

Water quality monitoring \$24,488 is over budget by \$10,754 due to carrying out extra samples so as to comply with Drinking Water Standards.

Consent monitoring cost \$1036 is under budget by \$3488.

Wastewater:

Operation and Maintenance expenditure as at the end of December 2018.

Electricity cost \$16140 is over budget by \$1050. This was due to a large account for one of the pump station which has been in credit for a number of months. So the over budget is starting to reduce.

Contractor \$127,338 is over budget by \$45,972. This has been due to blocked sewers in Tekapo and Twizel. Also there was some earth works done on the Tekapo new disposal field swipe drain.

Consent monitoring \$4,753 is under budget by \$4,667.

CCTV \$0.

Storm water:

Operation and Maintenance expenditure as at the end of December 2018.

Contractor \$13,969 is under budget by \$317.

Consent monitoring \$696 is under budget by \$630.

Allandale:

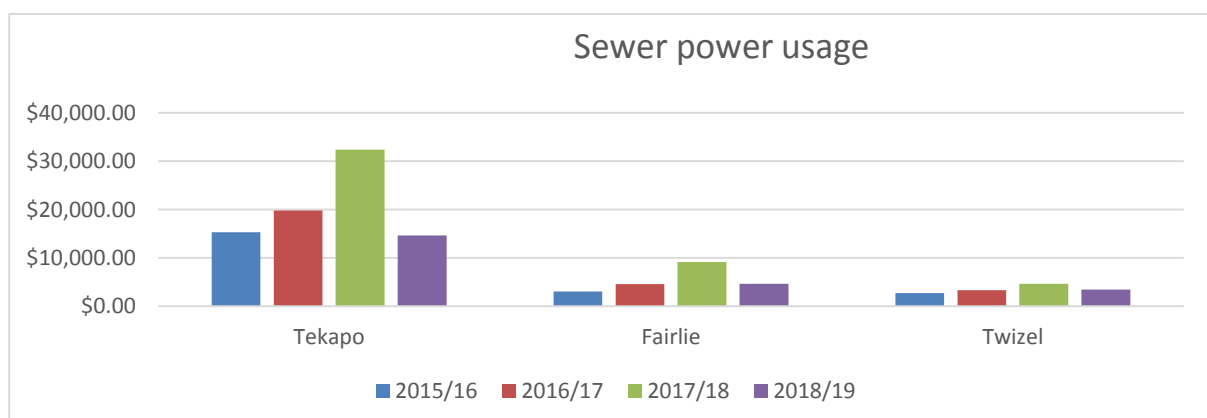
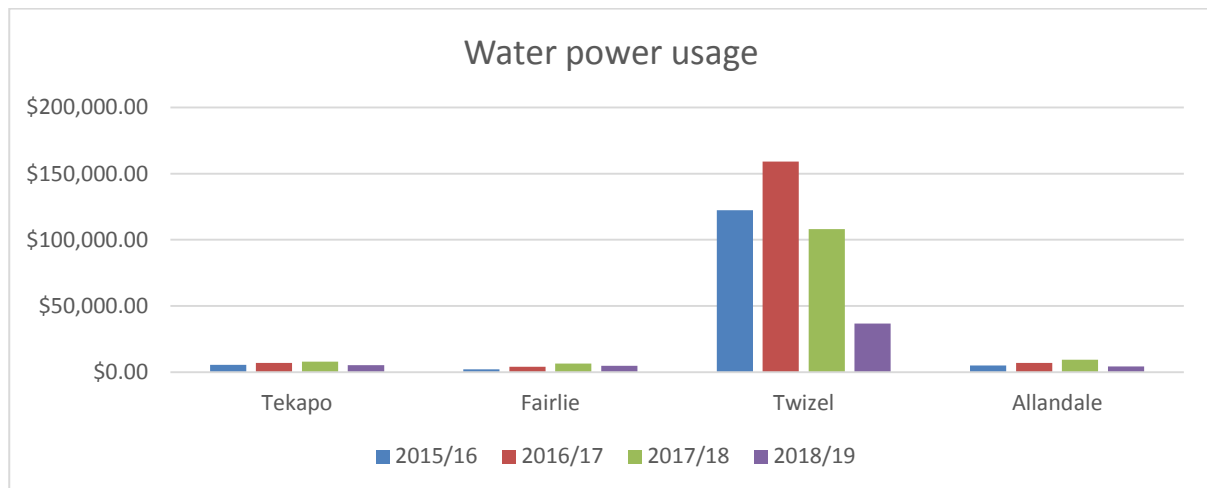
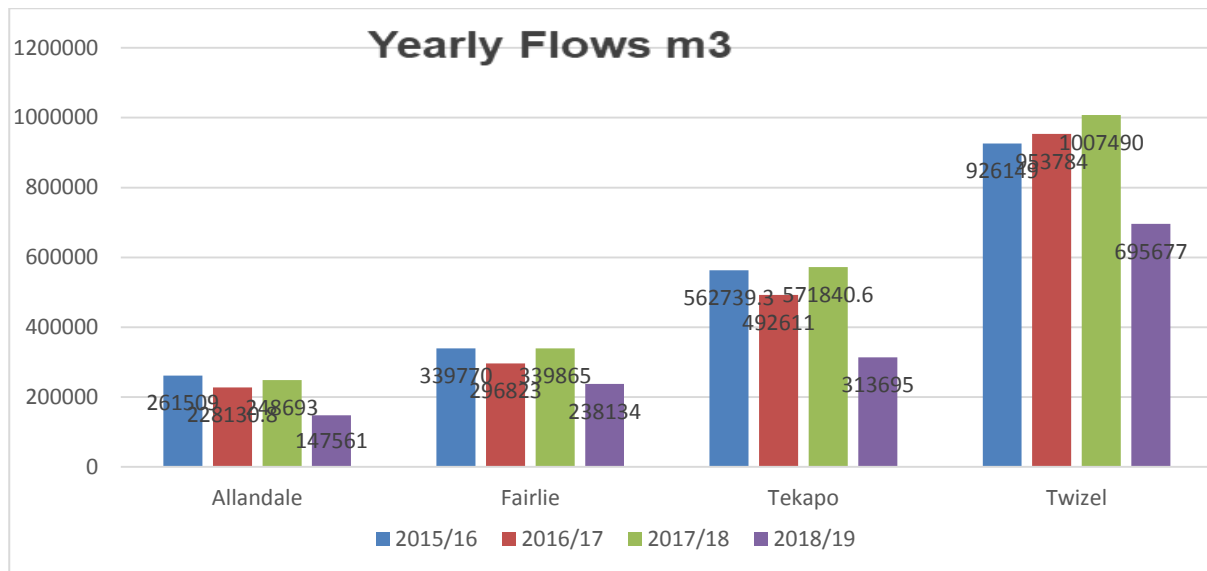
Operation and Maintenance expenditure as at the end of December 2018.

Contractors \$39,669 is over budget by \$12,171. Tank inspections and locating leaks that have developed.

Electricity cost \$333 is over budget by \$27.

Water quality monitoring is \$4,361 is over budget by \$2,111. This is due to extra sampling so as to complying with Drinking water standards.

SPUR Rd pump shed electricity \$2624 is under budget by \$212.



ROADING

Parking surveys

In mid-January we carried out parking surveys in each of our three major towns in the district. These works were carried out by the Canterbury Rowing Club as a fund raiser. A comparison has been completed for Tekapo compared to the survey completed two years ago. This shows a slight reduction in numbers on the days surveyed compared to 2016. This may be due to the way holidays fell but is not definitive. The surveys were carried out on Thursday and the Saturday in Tekapo (as was completed previously). This was to compare if there was any major change in the numbers with the possible influx of domestic tourists during the weekend. In Twizel and Fairlie baseline data was captured on the Saturday only to inform further transportation strategy works going forward. This data hasn't yet been processed and compiled into a report but has been captured.

North Street Bridge Update

The bridge was closed due to deterioration of the substructure making it unsafe for pedestrian use. This is because the current bearing timbers have serious cracks in them. Work has been completed on a sufficient size designed timber to replace the existing. The required timber to complete the repair is hardwood which needs to be sourced from overseas. Due to this we are looking at alternatively steel members to reopen as our contractors do have some steel in stock. Staff are also looking at full replacement option as a large proportion of the bridge would need to be deconstructed to repair. We are assessing if a new structure is a more feasible solution to bring it up to today's standard extending the useful life. We will bring a report to council outlining the options. At this stage the bridge remains closed until repair works are completed.



Eastern Carpark Update

The design is now complete for the Eastern Carpark. This was required to deal with the storm water on the site and dispose of correctly as well as appropriate set out information. This has taken longer than envisaged to complete but will ensure a quality project is delivered. The original contractor organised to originally carry out the work needs to be advised, pricing confirmed and project programmed in. Once this is complete we will be able to provide definitive time frames for the completion of these works and will undertake communicate fully with all parties.

Pukaki Airport Surfacing

The Pukaki airport taxi ways are due for a second coat seal to ensure the pavement remains waterproof. A cape seal is to be constructed (which consists of a waterproof membrane seal and then a slurry is to be applied) which will result in a dense bound surfacing similar in appearance to an asphaltic concrete. This will be managed under our road reseal contract with Fulton Hogan. Resurfacing is programmed to begin for the membrane seal in the coming weeks followed by the slurry once this has bedded in sufficiently and climatic conditions are suitable to achieve a high quality product.

Resealing

Resealing to waterproof the pavement has begun in the district. The resealing works are being carried out by Fulton Hogan as part of our combined road resurfacing contract with Timaru and Waimate. The works are just over half complete at this stage, with the initial sealing in the Mackenzie Basin and the remainder of the resurfacing in Fairlie and Albury programmed for completion over the coming month.



Unsealed Road Re-metalling

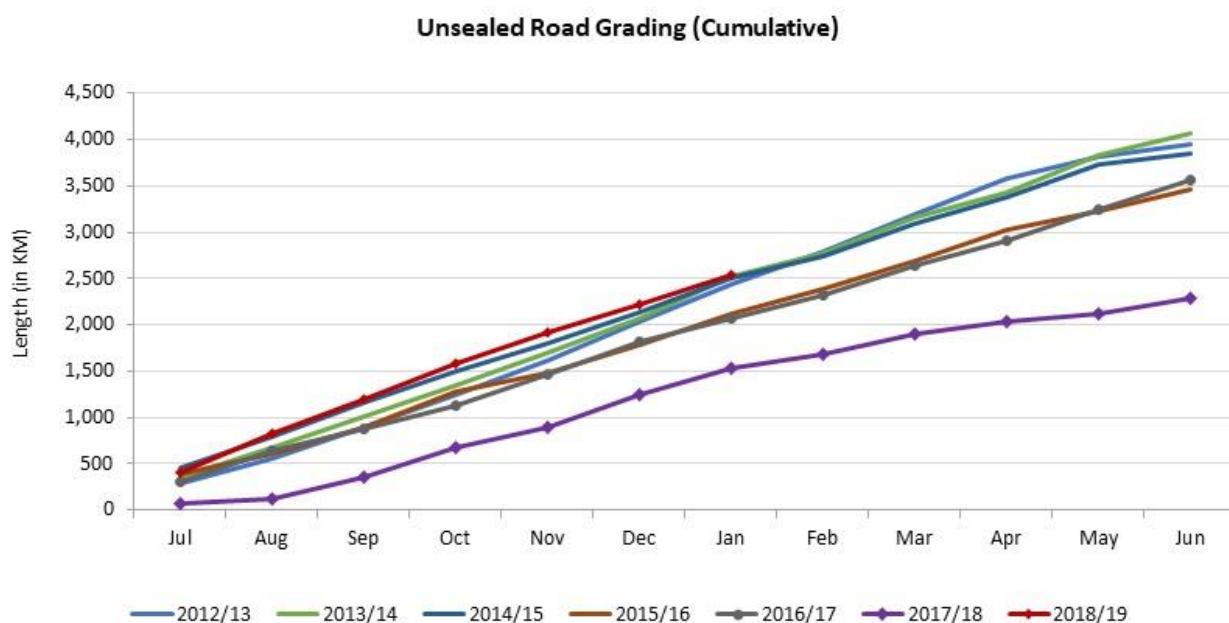
The re-metalling is to replace the gravel that is worn away and broken down to dust over time. This is applied in various treatments either wearing course, maintenance metalling or spot metalling. Metalling is the term use when apply new granular aggregate material to the road which is typically crushed and blended. This is truck and trailer spread then graded to the correct cross sectional profile. When completing wearing courses due to the depth a construction roller is also used to compact the material. Currently we are just over half way through the re metalling programme which is carried out by Whitestone under the Maintenance Contract and as further aggregate is crushed/ manufactured this will continue over the coming months. Majority of the work is now complete in the Pukaki Ward prior to winter setting in.

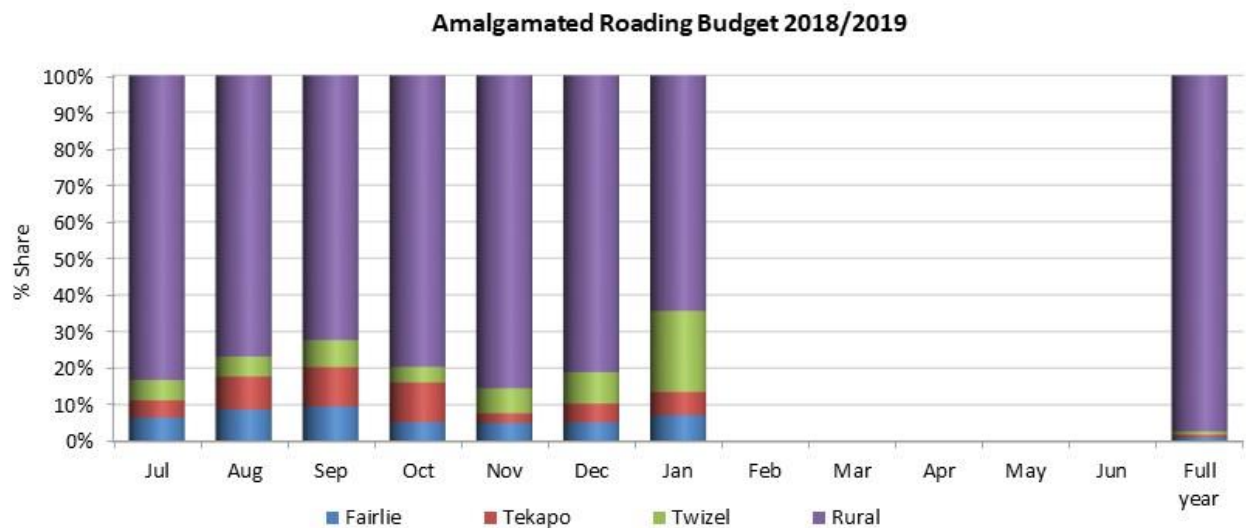
Aoraki Roothing Collaboration (ARC)

The Aoraki Roothing Collaboration was created to have a formal arrangement for sharing of knowledge across the four councils, partnering for delivery, testing thinking, challenging, sharing innovation and working consistently across various roading projects. The Aoraki Roothing Collaboration consists of four Councils being Timaru, Ashburton, Waimate and Mackenzie. The major project that has been achieved is the standardised maintenance document for our four contracts. A combined reseal contract between Timaru, Waimate and Mackenzie is also in place as well as coordinating with Ashburton on their contract. It has also built relationships and aided in various other roading project matters e.g. formation of NLTP and strategic case issues, training requirements, etc. An agreement has been signed up for the next 3 years by the 4 CEO's, with the rewriting of our combined maintenance contract and re letting this being one of the main projects for delivery.

Seal Pavement Maintenance Repair

Currently sealed pavement maintenance repairs are being undertaken on failed areas of pavement within the network prior to the onset of winter. These repairs require various types of treatment depending on the fault, but can include but is not limited to digging out the surface, fixing edge break, waterproofing of the pavement, etc. These works are typically carried out during this time of the year because the weather is typically settled and predominantly fine stopping water ingress. Also sealing or repairs also requires sufficient ground and air temperature to ensure a quality product is achieved. These works are to be carried out by Whitestone as part of our Maintenance Contract.



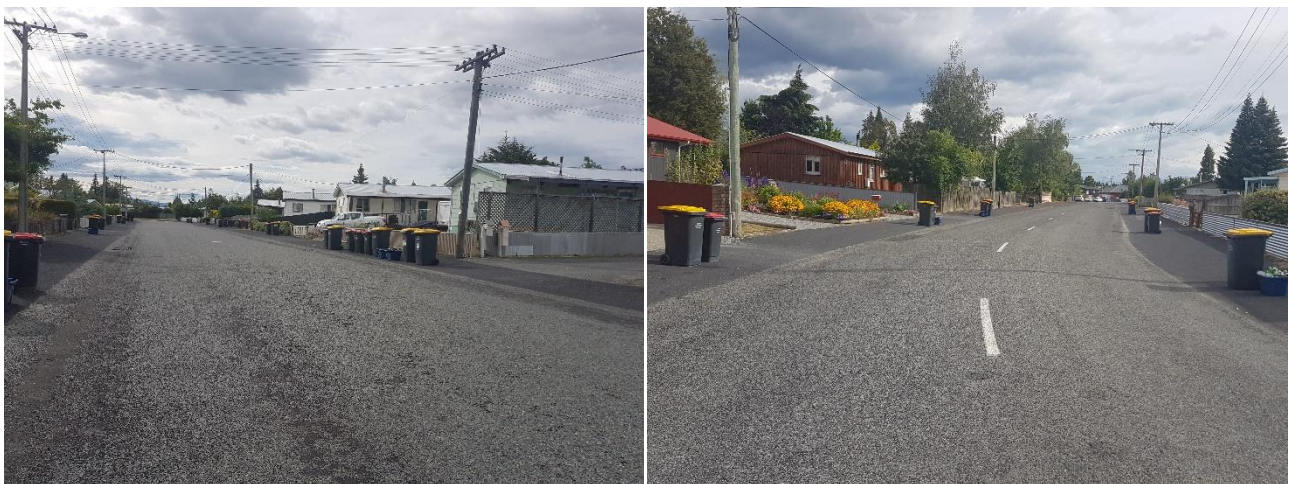


SOLID WASTE

Operational

Waste services over the Christmas/New Year's period ran smoothly. Envirowaste provided additional staff and an extra collection vehicle to resource the busy holiday period. Customers into the three Resource Recovery Parks remained high over the summer and in particular high customer volumes were received in the days following New Year's.

The additional collections in Twizel and Tekapo were once again well received by both communities. Several comments have been received from Tekapo residents on whether extra collection can be provided during other holiday periods and staff will investigate this further. The Tekapo Resource Recovery Park was opened for an additional day during the summer period to assist residents and businesses with waste during this busy time and was well utilised.



Kerbside collections in Lake Tekapo have reached a point where two collection trucks are now required on an ongoing basis. New residential developments have increased the number of wheelie bins presented for collection and the weights collected are now too high for the standard collection vehicle alone. Similarly, due to an increase in weights on red/residual bin week in Fairlie, two trucks

are also operating for this collection and it is anticipated this will continue from now on. Monday and Tuesday collections in Twizel continue to utilise one collection vehicle, with this being able to return to the Twizel Resource Recovery Park to unload part way through either collection day as required.

There has been an increase in the amount of waste diverted from landfill. This is largely attributed to an increase in greenwaste and recycling being delivered to the Resource Recovery Parks. Residual waste volumes continue to remain low and staff are investigating reasons for this trend.

Education

Information of waste services over the Christmas period and additional education on the correct items to place in each bin featured local newsletters and on Facebook over the summer period.

Social media is proving to be an effective platform of engaging with our communities on waste and a new social media strategy is being developed to promote waste education.

Waste Management and Minimisation Plan

Planning is underway to develop a work plan to give effect to the action plan in the Waste Management and Minimisation Plan (WMMP) that was adopted towards the end of 2018. This will involve a range of projects and investigations throughout solid waste activities, with an initial focus on the key issues identified in the plan of organic, rural and tourist waste.

Ministry for the Environment (MfE) waste levy audit

A Senior Analyst/TA Liaison from MfE recently undertook an onsite audit on Mackenzie's waste levy expenditure. This involved a detailed interview with the Solid Waste Manager and the provision of details of that expenditure using the waste levy funds. The waste levy is collected by the Ministry based on \$10/tonne of residual waste sent to landfill. MfE allocate part of this levy to Council's to use on waste minimisation projects that are in accordance with a Council's WMMP. For the 2018 financial year, Mackenzie utilised waste levy funding for a number of projects including providing subsidies on home composting units, waste free parenting packs (including cloth nappies), reusable coffee cups, supporting EnviroSchools and Paper4Trees recycling in the district, contributing to a national website with waste information and education, online education to our communities, running a Love Food Hate Waste market stall and providing worm farms and waste resources to several preschools.

It is noted that discussions are taking place around changes to the current amount and application of the waste levy. MfE have indicated the first step in this process is to extend the number of landfills the levy applies to. It is expected this will apply to a significantly increased number of landfills and is likely to include the three clean fill sites in the Mackenzie District. It is anticipated that the next step will be a review of the amount of the levy. Both these changes may affect the amount of levy funding Council's receive and contestable funds that can be applied to for waste minimisation related projects.

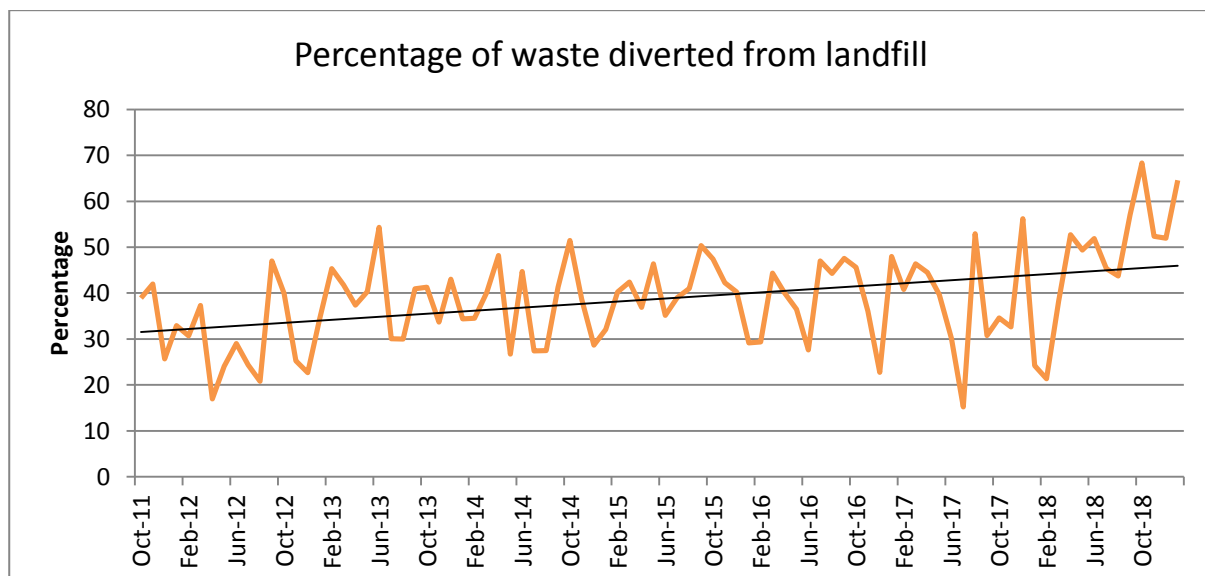
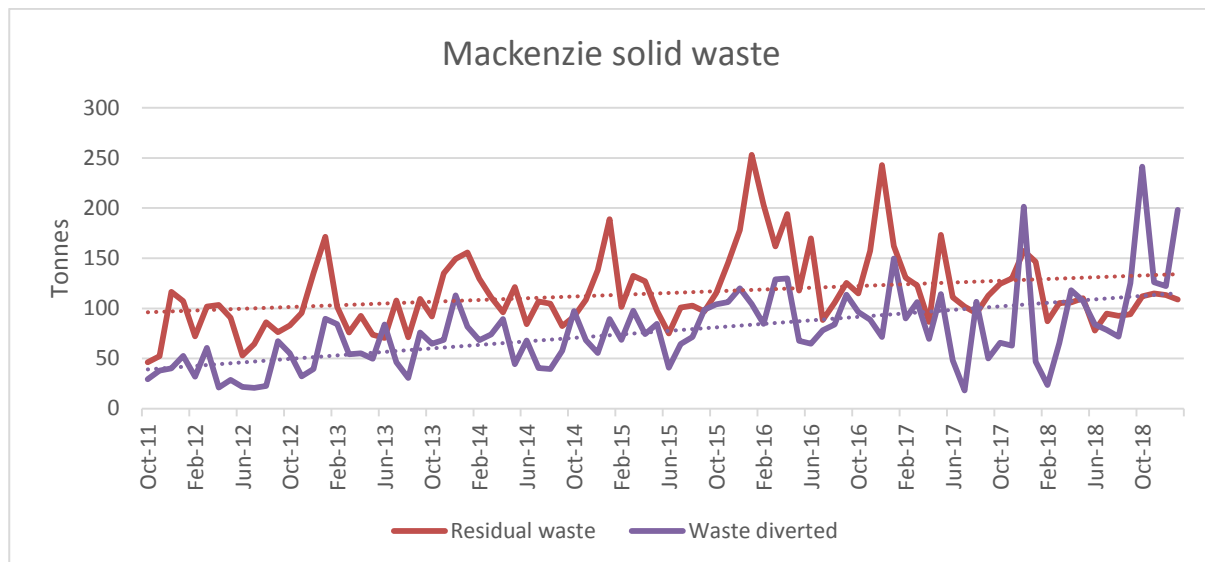
MfE have also advised that there are significant work programmes being set up around waste management and minimisation, accompanied by an increase in staff resourcing in the waste division of the Ministry. It is positive to see a focus on waste at this high level.

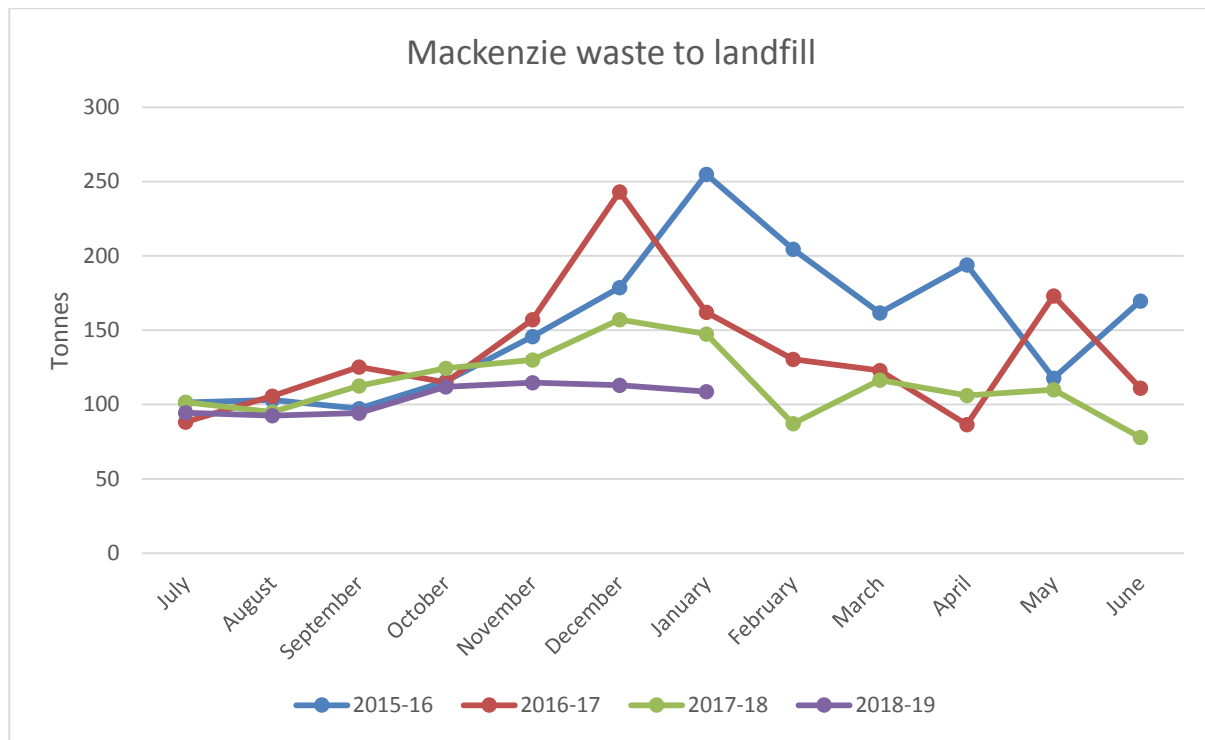
The Senior Analyst/TA Liaison from MfE managing the audit process noted that Mackenzie is in the top 20 Councils for delivery of waste services. This positive comment reinforces the findings in the

2018 Waste Assessment that the Council is performing well in terms of waste management and minimisation. The action plan in the WMMP will continue to foster the current services and allow for innovation to progress the Council's waste goals further.

Health and Safety

Envirowaste have no recent serious health and safety incidents associated with the Council waste services contract to report.





CONCLUSION

To update the Assets and Services Committee on the progress on various projects and also the normal operation of the department for the past month.

SUZETTE VAN ASWEGEN
CHIEF EXECUTIVE OFFICER

5.3 COMMUNITY FACILITIES REPORT**File Reference:** PAD 2/4**Authoriser:** Garth Nixon, Group Manager Community Facilities**Attachments:**
1. Freedom Camping Report - January 2019  
2. Alps 2 Ocean Briefing - Confidential**STAFF RECOMMENDATIONS**

That the information be noted.

BACKGROUND**Townships****Tekapo**

Church of the Good Shepherd project is progressing well. There has been very positive feedback received from residents and the Church Committee. Work still to do here includes irrigation and planting, formation of the mound in the existing carpark and bus parking on the western side of the footbridge. The Dog Statue paving is now complete and we are awaiting handrails and the sealing of the footpaths.

The volumes of rubbish continue to be an issue in Tekapo, and is an ongoing issue for Council to decide how we deal with this going into the future.

We have had a number of problems with the compacting bin at Hamilton Drive, Tekapo over the Christmas period. Failure of the electronics due to poor engineering design. This was rectified prior to Christmas but then failed again. I had been working with Manco and local contractors to resolve this situation. New parts have been supplied and installed and the compacting bin is now functioning as intended. The bin currently located at Lake Alexandrina appears to be getting little use and we are considering relocating this to the South End entrance to better service both camps.



View of the Church from the west, showing newly installed fence and planting area





New entrance plinth and front gate at the Church of the Good Shepherd

Western Carpark toilets

January 2019 39,097 occupations (this is 10,000 more than this time last year)

Bridge Toilets

January 2019 2,006 occupations (year to date income in the region of \$6,000)

Lakeside Drive Toilets

Since opening in August 2018 – 50,791 occupations

Toilet numbers indicate high usage.

Fairlie

The bus stop opposite the BP Garage on Mt Cook Road and the drinking fountain by the Fairlie public toilets projects have been completed. Both of these projects were funded by Heartlands Fairlie second hand markets held on Saturday mornings during the summer months.

The walkway to the Fairlie Cemetery has been completed and looks really good. This was a Fairlie Community Board project.



Newly constructed path from 1 Main Street to the Fairlie Cemetery.

Twizel

The new theatre seats have been installed in the Events Centre. I have received positive feedback on these. There about 4-5 seats with cut marks on them from when the installers unpacked the seats. This is being resolved with the supplier.

The swimming pool is having a good season and is proving to be very popular. The improvements, new pool cover and lining have been well received.

The next stage is commencing after the pool closes, and will include lining the learn to swim pool with new heatpump and infiltration system.

We will continue to work on the possible solar heating upgrade.

Twizel Information Centre

The Information Centre is as busy as ever, with 10% increase in visitor numbers when compared to the same time last year.

Number of Visitors 2017/18	Number of Visitors 2018/19

November, December, January	20,682	22,693
-----------------------------	--------	--------

Mackenzie and Waitaki Basin Responsible Freedom Camping

- This project has included installation of seven toilets, roading improvements, signage and enforcement works. The majority of which was achieved before the December deadline. There has been a number of issues particularly with two NZTA rest areas. The balance of the project has been a real success.
- The Pattersons Pond work which included roading improvements, parking area and a new toilet has been a real success as indicated in the attached Geozone Freedom Camping report. This site is proving very popular. The improved access and facilities has made this site more desirable which in turn takes pressure off Tekapo Township.
- The Hayman Road rest area, the toilet provided at this location is very well used. Had this rest area been constructed without the toilet, Council would have been on the receiving end of numerous complaints even though it is outside of our jurisdiction.
- Other improvements were undertaken at Lake Poaka and Ahuriri Bridge (DOC).
- Education and Enforcement – the fund has enabled us to engage effectively a full time warden monitoring sites across the Mackenzie Basin.
- The new signage installed is consistent across DOC, NZTA, Mackenzie District Council and Waitaki District Council sites, and the current donation boxes and additional ones to be installed are helping to offset cleaning costs.



Photo - Toilets in storage at DOC, awaiting installation on various sites.



Photo – Pattersons Ponds



Photo – Edwards Stream, Tekapo

Alps 2 Ocean

Tourism Waitaki have relinquished control over the maintenance works of the trail. Mackenzie and Waitaki District Councils have sought Registrations of Interest from interested parties. As a result of the Registrations of Interest I have sought prices from two contractors to undertake the Mackenzie component of the work based on a consistent Alps 2 Ocean specification. Work includes regular inspections, minor track maintenance, post flood inspections, pruning, spraying, and annual engineering safety inspections. Interim maintenance is in place with work being undertaken by one of our track construction contractors.

Tekapo Community Hall

Expressions of interest were called for from persons interested in providing management services for the Tekapo Community Hall. No applications were received. I am happy to advise that Richard Herrick and his partner Jovanna are providing management services to the Tekapo Community Hall based on a very similar contract to Tekapo Weddings.

CONCLUSION

The Committee is asked to note the report of the Group Manager - Community Facilities.

SUZETTE VAN ASWEGEN
CHIEF EXECUTIVE OFFICER



National **FREEDOM CAMPING REPORT**

Mackenzie District
Jan-2019



Your Council Region-Mackenzie District

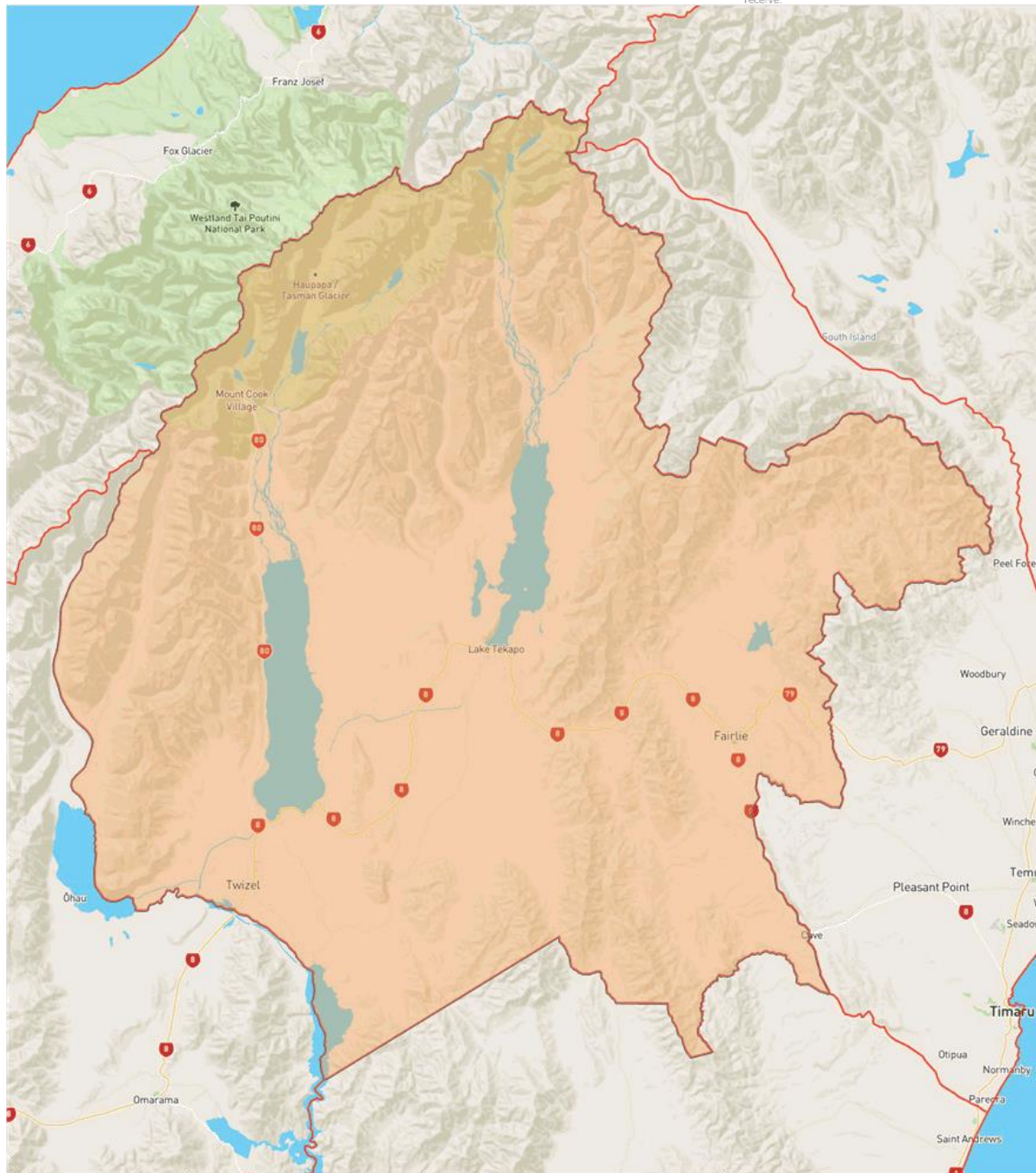
The following report uses GPS and event data captured from the CamperMate smartphone application and other GeoZone applications during the period Jan-2019 and within the boundaries of the Mackenzie District region.

**Total events analysed
in your region during
the month**

1,747,959

An event could mean an individual's updated user GPS location, a category tap on the app, a profile page view basically an event is an action that we receive.

Your Region Boundary For Mackenzie District



1-Overnight Stays

What Areas Are Users Spending Nights In Our Region?

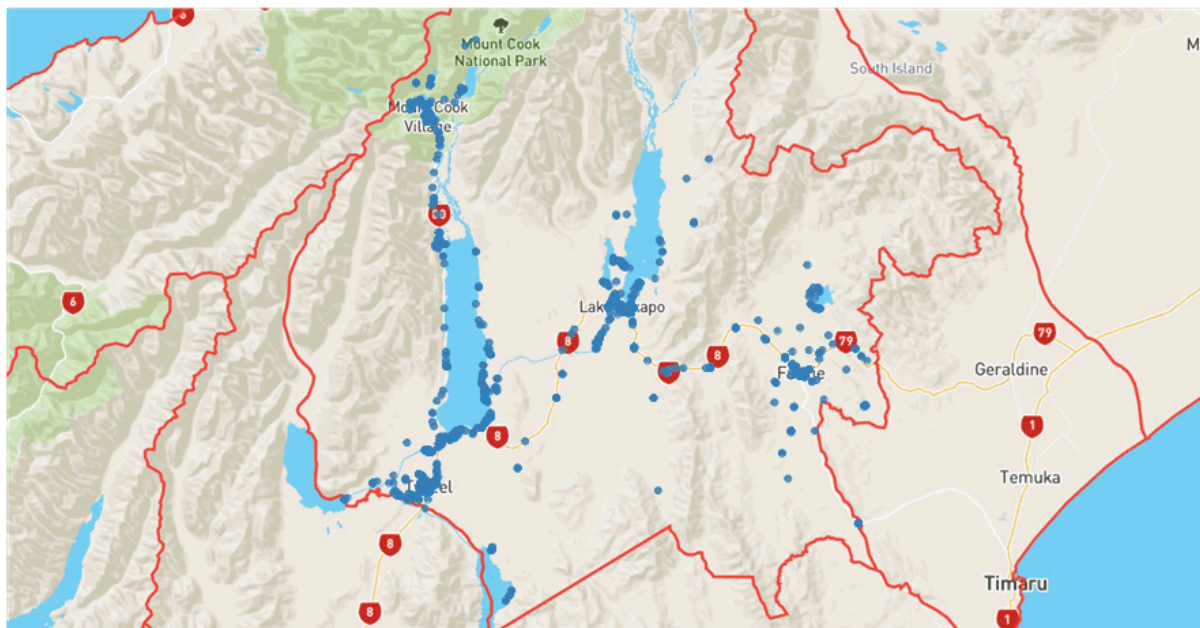
We log data on where we believe users have spent the night. In many cases this will be at commercial holiday parks however this will also be at freedom campsites, both designated and not. This will give an indication on the popularity of various sites in the region. Our GPS data can have a +/- of around 10 metres.

Note: Please keep this confidential as this data can be considered commercially sensitive to holiday parks.

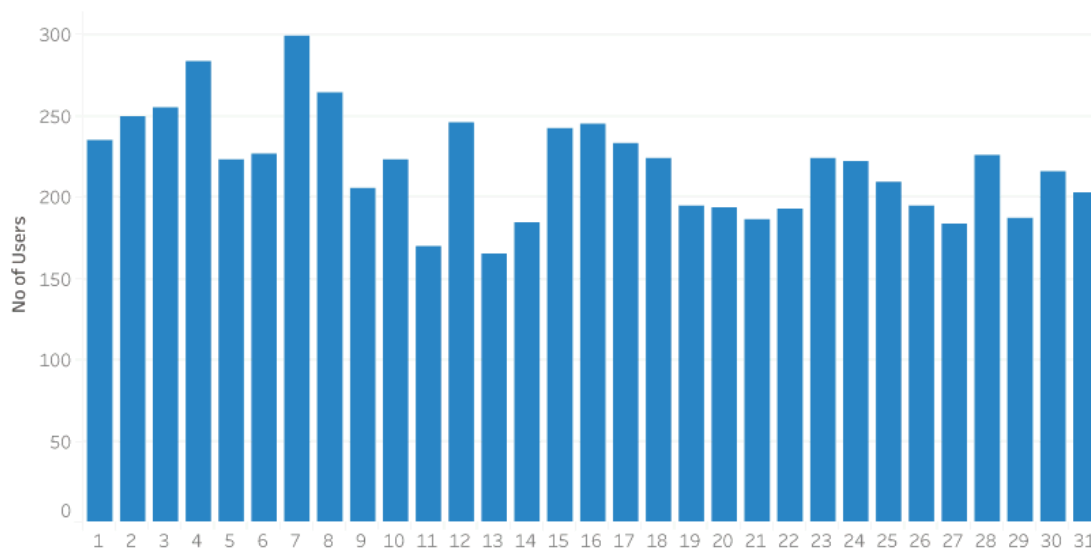
Total Overnight Stays Analysed In Jan-19 Mackenzie District

6,810

Overnight Stay Locations (One Dot = One Night)



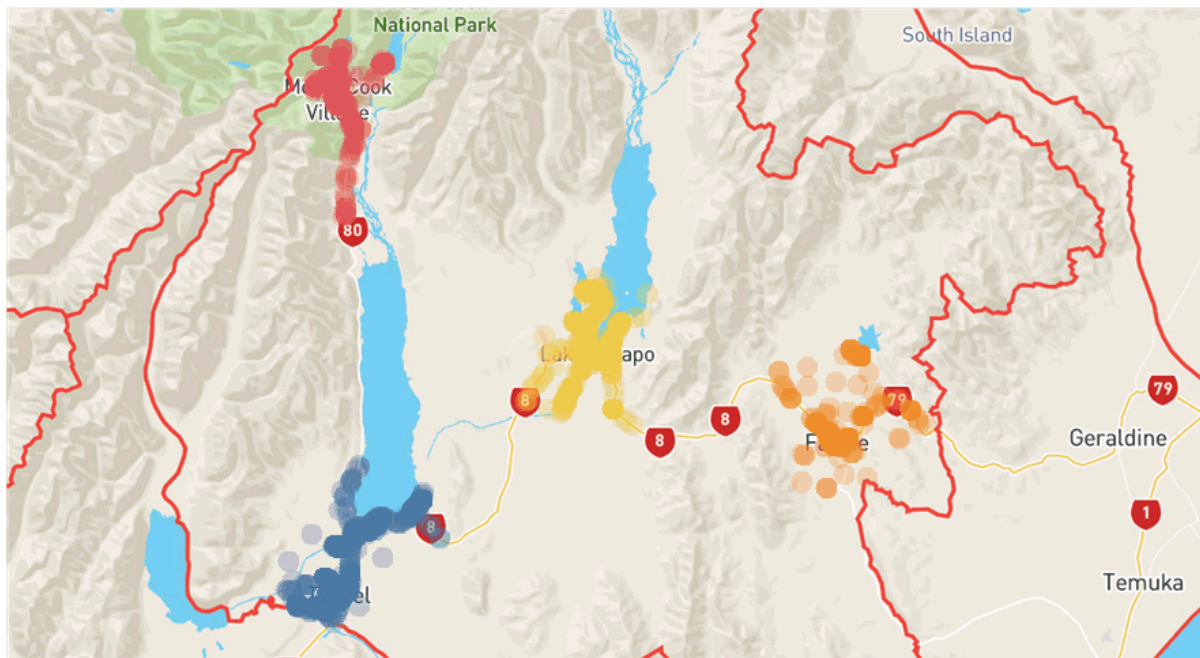
Overnight Stays By Day Of Month



2-Key Areas In Your Regions Where Users Are Staying Each Night

Key Areas In Your Region

We capture data on where users are spending the night. The visualisation below creates four distinct clusters of where the main areas of overnight stays take place (these must be within a 10km radius to be countered as a cluster). The table below this visualisation, shows the number of overnight stays per clustered area.



Number Of Overnight Stays Per Cluster

Cluster 1	Cluster 2	Cluster 3	Cluster 4
2,376	2,103	1,120	494

3-Prior/Next Region

What Areas Do Users Go Prior/Next?

We log data on the movement of users and in this case, we log which region they have come from, and which region they go to after immediately visiting your region.

Note: This is based on the users GPS location in region.

Next Region

Went To Region	Crossings
Waitaki District	39.4%
Timaru District	30.4%
Queenstown-Lakes District	6.3%
Central Otago District	4.6%
Christchurch City	4.4%
Ashburton District	4.4%
Selwyn District	2.4%
Dunedin City	0.9%
Waimate District	0.8%
Westland District	0.8%
Southland District	0.8%
Hurunui District	0.7%
Auckland	0.5%
Tasman	0.4%
Kaikoura District	0.4%

Prior Region

Entered From Region	Crossings
Waitaki District	42.63%
Timaru District	26.98%
Queenstown-Lakes District	6.01%
Christchurch City	5.21%
Ashburton District	4.25%
Central Otago District	4.25%
Selwyn District	2.24%
Dunedin City	1.08%
Southland District	1.06%
Waimate District	0.89%
Westland District	0.76%
Hurunui District	0.70%
Auckland	0.53%
Tasman	0.44%
Kaikoura District	0.31%

4-Time Entering/Exiting Region

What Time Are Users Coming Into Your Region?

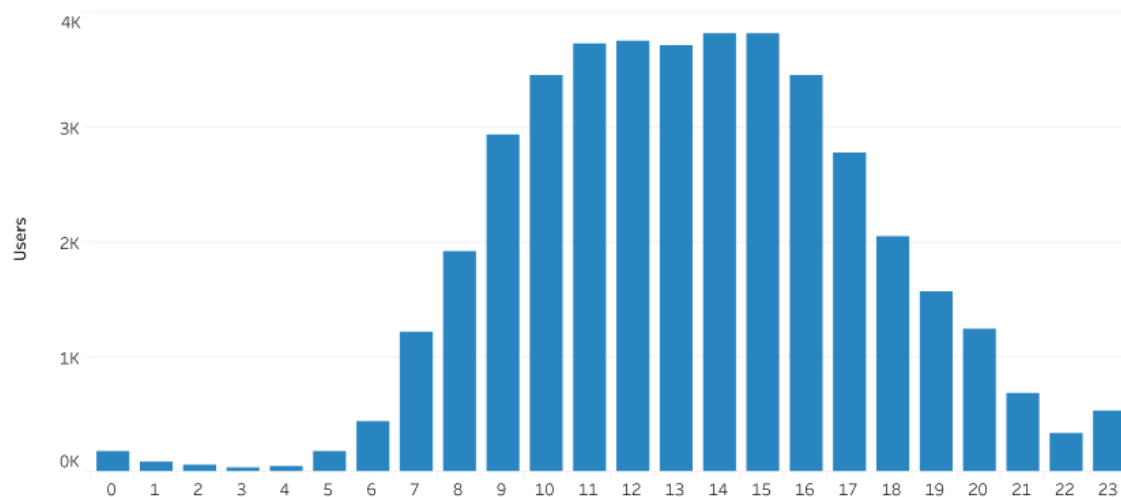
We log data on users location and the time that movement occurred.

We use this combination of data to identify what time users are entering and exiting your region.

Note: This includes all visitors to your region. This is the time their device sent us their location in one region, then their next GPS location appears within your boundary.

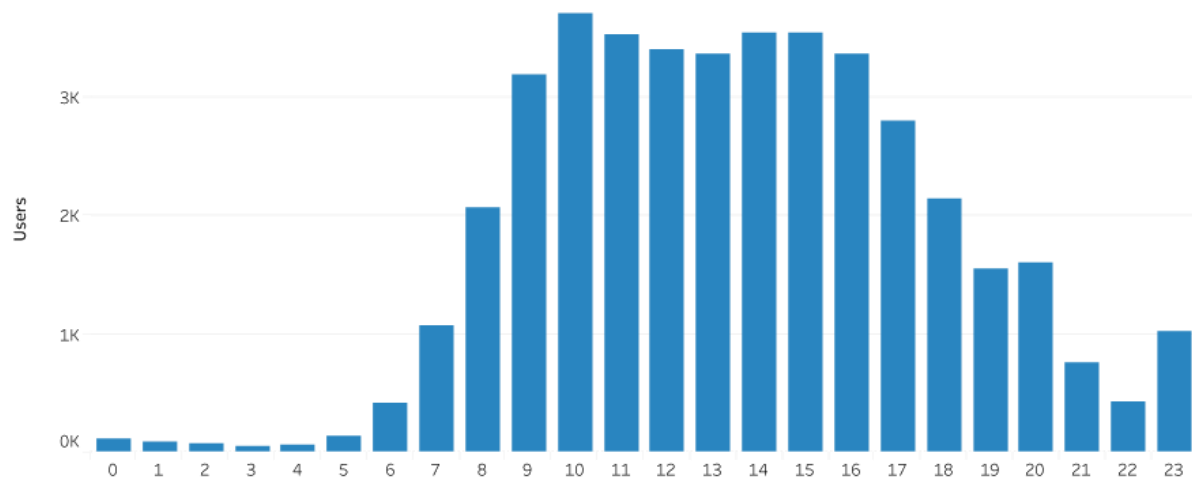
Time Of Day Entering Your Region

Hour of day users entered region.



Time Of Day Leaving Your Region

Hour of day users leave region.

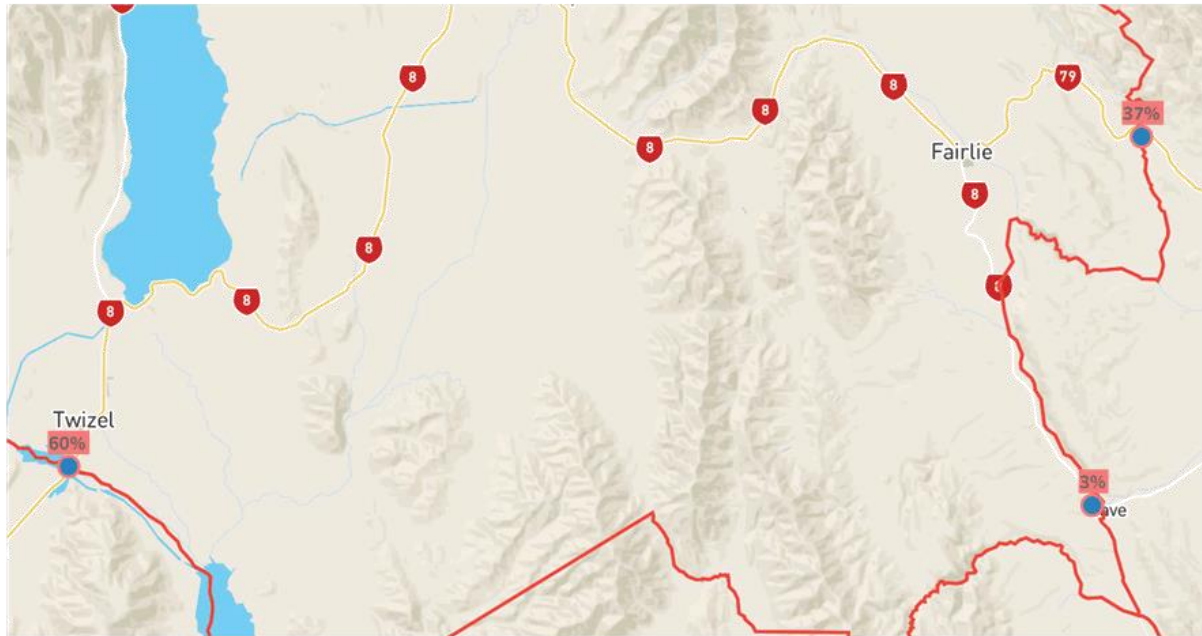


5-Roading Entry Points Into Region

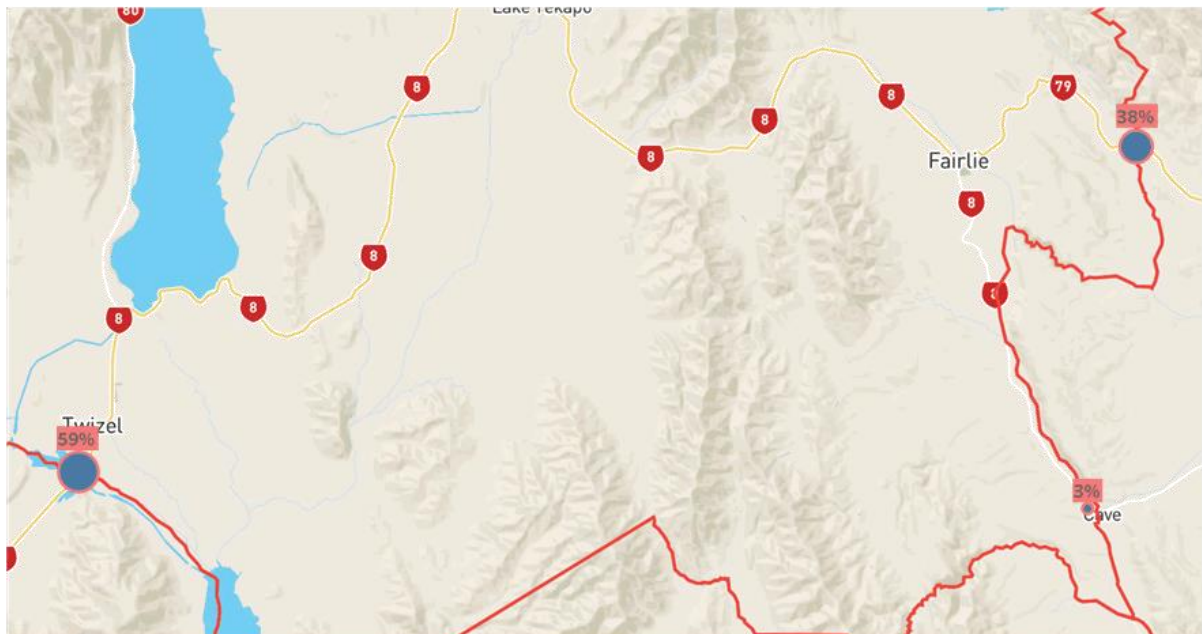
What Roads Are Users Taking To Enter Our Region?

GPS data is captured from devices as they move. We log this data and determine how they are entering the region using the road network.

User Inflow For Mackenzie District Along Road Network



User Outflow For Mackenzie District Along Road Network



6-Number of Nights In Mackenzie District

How Long Are Users Spending In The Region

This table below shows how long users are spending in your region. Zero nights means they are arriving in the region and leaving the same day. 1 night means that we're capturing their location in your region, then the next night we're seeing their location in another region.

Note: This will include locals data, however after 10 days of no use the app will no longer show them as in the region.

No of nights	International			Domestic		
	Your Region	% in Region	% National	Your Region	% in Region	% National
0	76,824	73.3%	65.8%	20,658	76.3%	69.3%
1	19,720	18.8%	8.0%	4,329	16.0%	7.7%
2	5,645	5.4%	5.2%	1,194	4.4%	4.9%
3	1,511	1.4%	3.9%	382	1.4%	4.0%
4	448	0.4%	2.9%	166	0.6%	2.6%
5	176	0.2%	2.4%	107	0.4%	2.2%
6	106	0.1%	1.9%	53	0.2%	1.8%
7	63	0.1%	1.6%	42	0.2%	1.3%
8	52	0.0%	1.5%	33	0.1%	1.3%
9	39	0.0%	1.2%	23	0.1%	1.0%
10	37	0.0%	1.1%	17	0.1%	0.8%
11	23	0.0%	0.9%	10	0.0%	0.6%
12	23	0.0%	0.8%	13	0.0%	0.6%
13	21	0.0%	0.7%	4	0.0%	0.2%
14	12	0.0%	0.4%	12	0.0%	0.4%
>14 nights	65	0.1%	1.6%	47	0.2%	1.2%

Time spent in your region as a % of total time in New Zealand

*International travellers only.

2.4%

7-Public Toilet Search Locations

Where do we need to add more Toilets?

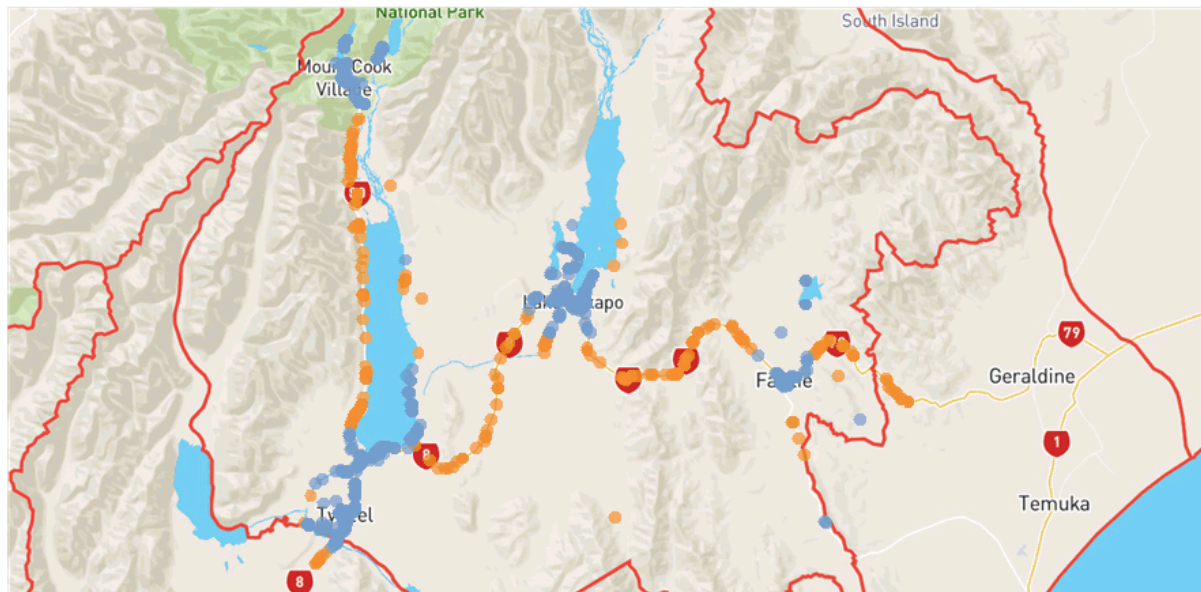
GPS data is captured from devices as they search for certain things on the app. We log data on searches for 'Public Toilets' and determine where these searches take place. We then cross reference this data with the actual locations of public toilets that we have on the database (approx 7,500 in total) and determine where people are searching for public toilets, if the distance is greater than 5kms. If there's an increasing number of searches taking place in a certain area, it would be helpful to consider placing facilities there. Note: if there's a public toilet that we don't know about please tell us as this will impact the report.

This view shows us where toilet searches occurred in your region.

Orange indicates the search was more than 5km from the nearest identified toilet.

Distance from toilet
■ < 5km
■ > 5km

Public Toilet Searches



Nearest Public Toilet To Search

This table below shows for all of the searches that occurred where the toilet was more than 5kms away from the search location, where the nearest public toilet was. A high number of searches, with a large 'Avg. distance km' would indicate there is a high need for a public toilet near where those searches are taking place. Note: This visualisation works off our database of public toilets. If there is a public toilet which we don't know about, please let us know as this will change the visualisation.

Note: If there is no table there were no toilet searches in your region more than 5km from a public toilet. You can search for the POI ID on CamperMate to find the location of this toilet if it doesn't have a name.

Poi Id	Nearest toilet to search location	Number of searches	Avg. distance km	Number of searches
162831	Caples Greenstone circuit track			
24950	Otto/MacDonalds Campsite			
32118	Rum Curries Reserve (Closing)			
25780	St Mary's Parking			
5079	Public Toilet			
92223	Sam Summers Hut Toilet			
5861	Public Toilet			
9905	Public toilet, opposite the petrol station.			
20721	Public Toilet			
89398	Fairlie Good Toilet			

8-Freedom Campsite Popularity

What Are The Freedom Campsites We Need To Focus Our Attention On?

We capture the amount of times users viewed a profile page (information on the freedom campsite).

This gives us a good sense of popularity. We use this data to determine what freedom campsites in your region are getting the most views and therefore are the most popular.

Total Views Of Campsites In Your Region (Not Commercial sites)

Monthly count of users browsing campsites in your region.

Poi Name	No of Views
Lake Pukaki Reserve	14,117
Pattersons Ponds Camping Ground	8,817
Lake Wardell	6,232
Lake Poaka Amenity Area	5,370
Lake Ruataniwha (West End)	3,047
Lake Opuha - Bennetts Road	2,547
Lake Opuha – Opuha Gorge Road	822
Lake Opuha – Hayes Road Area	724

9-Profile Viewing Distance

How Far Away Are Users Viewing Freedom Campsites?

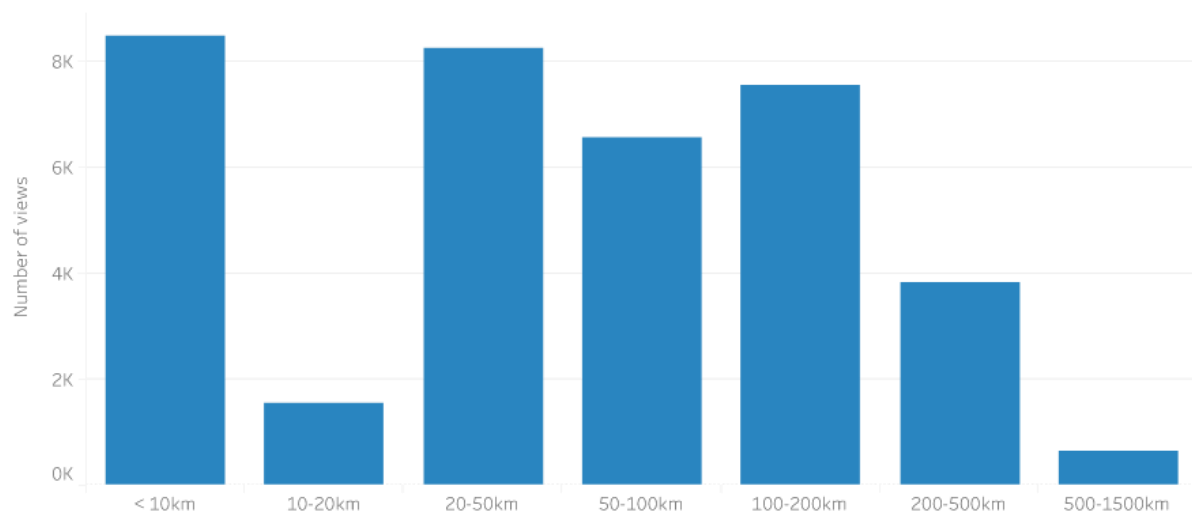
We capture data on where viewers are looking at Freedom campsite profile pages. This graph below aggregates all of the profile page views by distance for your regions campsites. To view each individual freedom campsite in your area see below this graph.

Note: This does not include commercial sector data

Campsite Views By Distance

Distance that users were from campsites when viewing the profile page.

Note: This data is aggregated for all of your sites.



10-Profile Viewing Distance

How Far Away Are Users When Viewing Freedom Campsites?

		Number of views	% of views
Lake Opuha - Bennetts Road	< 10km	249	10.4%
	10-20km	147	6.1%
	20-50km	760	31.7%
	50-100km	558	23.2%
	100-200km	433	18.0%
	200-500km	136	5.7%
	500-1500km	32	1.3%
	Overseas	86	3.6%
	Total	2,401	100.0%
Lake Opuha – Hayes Road Area	< 10km	104	14.6%
	10-20km	29	4.1%
	20-50km	210	29.6%
	50-100km	163	23.0%
	100-200km	124	17.5%
	200-500km	45	6.3%
	500-1500km	9	1.3%
	Overseas	26	3.7%
	Total	710	100.0%
Lake Opuha – Opuha Gorge Road	< 10km	76	10.0%
	10-20km	37	4.9%
	20-50km	220	29.0%
	50-100km	190	25.0%
	100-200km	137	18.1%
	200-500km	45	5.9%
	500-1500km	15	2.0%
	Overseas	39	5.1%
	Total	759	100.0%
Lake Poaka Amenity Area	< 10km	1,235	24.4%
	10-20km	157	3.1%
	20-50km	985	19.4%
	50-100km	934	18.4%
	100-200km	883	17.4%
	200-500km	528	10.4%
	500-1500km	98	1.9%
	Overseas	249	4.9%
	Total	5,069	100.0%
Lake Pukaki Reserve	< 10km	2,665	19.9%
	10-20km	494	3.7%
	20-50km	2,752	20.6%
	50-100km	2,140	16.0%
	100-200km	2,547	19.1%
	200-500km	1,526	11.4%
	500-1500km	212	1.6%
	Overseas	1,025	7.7%
	Total	13,361	100.0%

10-Profile Viewing Distance

How Far Away Are Users When Viewing Freedom Campsites?

		Number of views	% of views
Lake Ruataniwha (West End)	< 10km	513	17.9%
	10-20km	266	9.3%
	20-50km	479	16.8%
	50-100km	619	21.7%
	100-200km	496	17.3%
	200-500km	231	8.1%
	500-1500km	58	2.0%
	Overseas	197	6.9%
	Total	2,859	100.0%
Lake Wardell	< 10km	1,240	21.2%
	10-20km	206	3.5%
	20-50km	1,166	19.9%
	50-100km	1,059	18.1%
	100-200km	1,096	18.7%
	200-500km	635	10.8%
	500-1500km	111	1.9%
	Overseas	340	5.8%
	Total	5,853	100.0%
Pattersons Ponds Camping Ground	< 10km	2,388	28.7%
	10-20km	215	2.6%
	20-50km	1,687	20.2%
	50-100km	885	10.6%
	100-200km	1,834	22.0%
	200-500km	690	8.3%
	500-1500km	121	1.5%
	Overseas	513	6.2%
	Total	8,333	100.0%

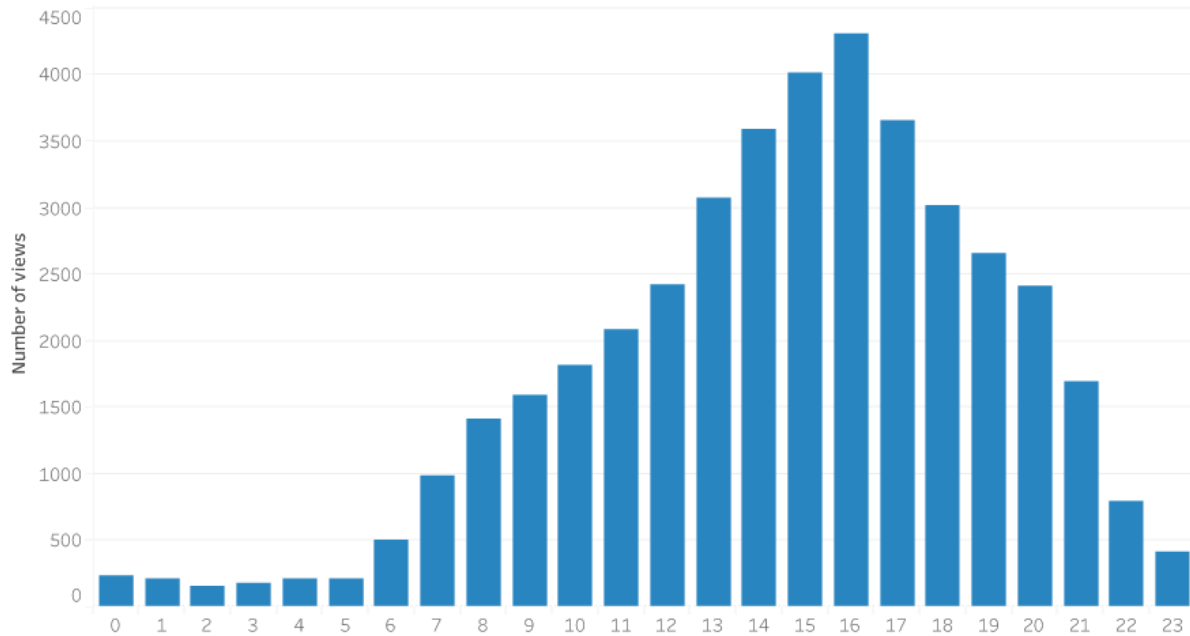
11-Campsite Search Times

What Time Of Day Are Users Searching For Campsites In Our Region?

When users tap on a freedom campsite profile page we log the time and location this search took place. We can use this data to identify when users are searching for campsites in your region.

Campsite Searches By Hour Of Day

Hour of search Users were looking at campsites



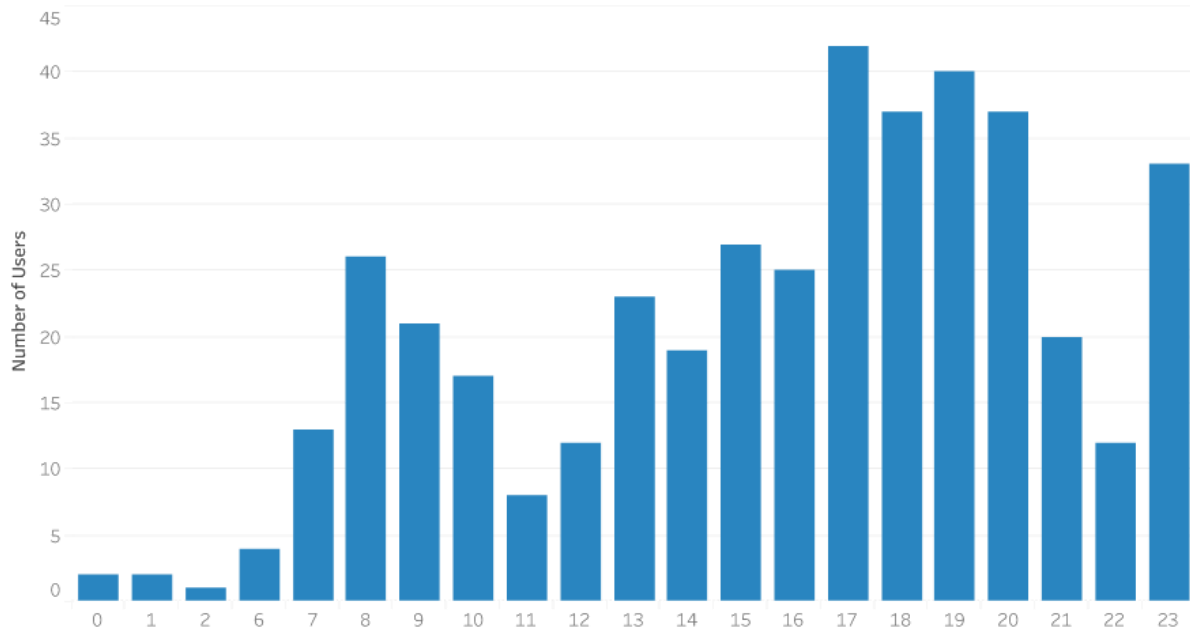
12-Freedom Campsite Time of Arrival

What Time Are Users Arriving At Freedom Campsites In Our Region.

We log the time of day that users have arrived at freedom campsites in your region. If the sites are also day sites that may well be frequented by users during the day, this is likely to be skewed.

Campsite Visits By Hour Of Day

Hour that users were at campsites

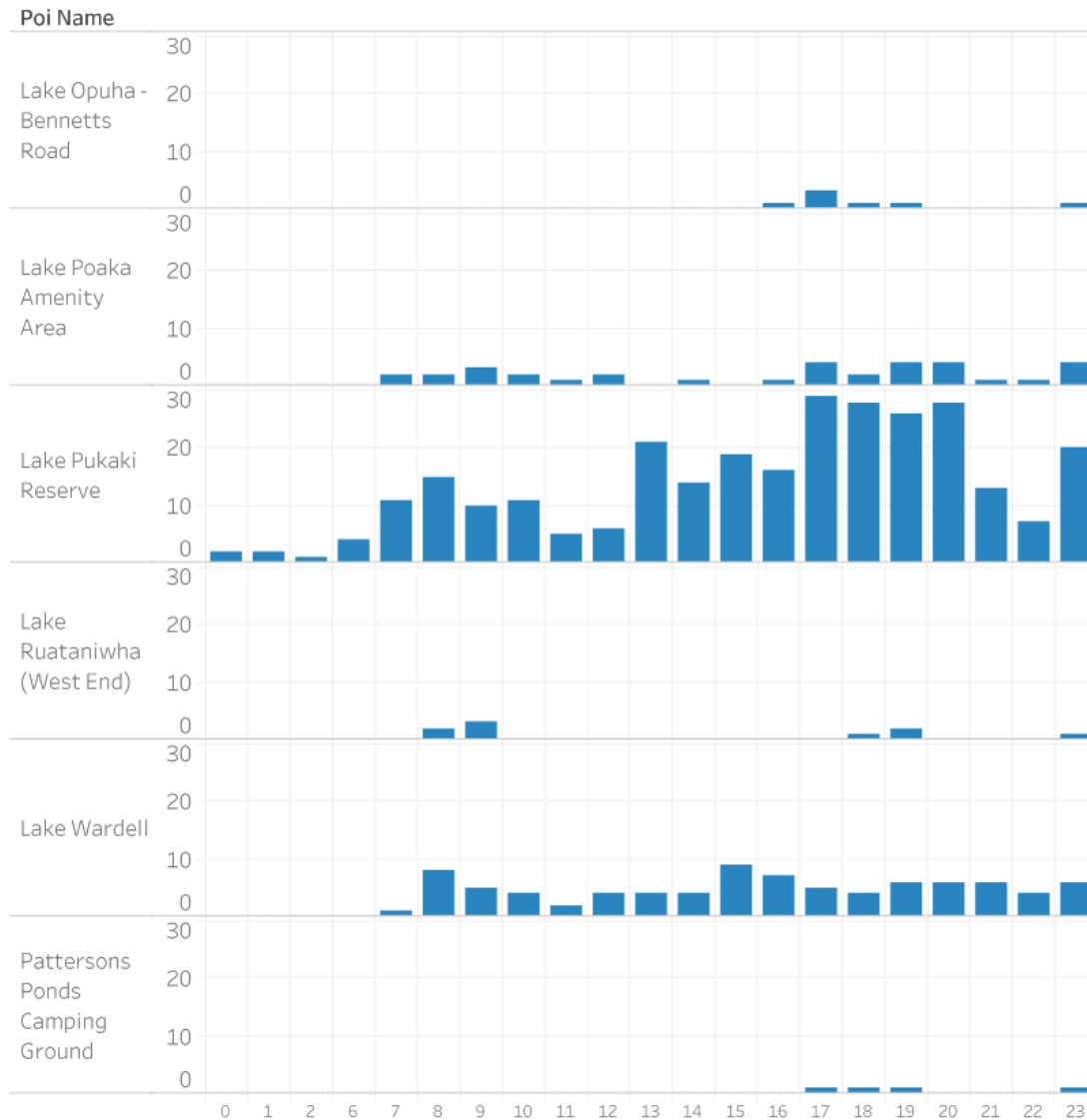


13-Freedom Campsite Time of Arrival By Campsite

What Time Are Users Arriving At Each Freedom Campsites In Our Region

Hour that users were at campsites.

Note: Users may poll with their GPS location outside the freedom campsite and will not be recorded in this graph.



**GET IN TOUCH**

If you would like clarification
on the contents of this report,
please feel free to contact me
on adam@geozone.co.nz

